

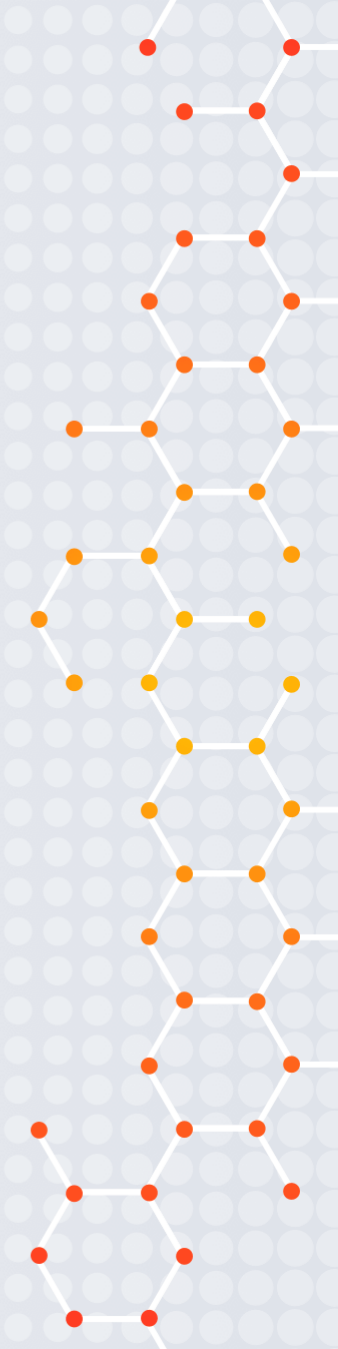
# My Robot- Assignment Marker 3.0 AKA Smarty



By 5C (6) Chong Din Yau Daniel

# Table of Contents

Foreword	4
Introducing: Assignment Marker 3.0	5
Parts of the robot and its features	6-7
Process of marking assignments	8-9
Comments from users	10
Will robots replace teachers in the near future?	11
Conclusion	12



## Foreword



Dear readers,  
I have exciting news! I, Daniel Chong, have created a robot that can help teachers to mark student's assignments. Why, you ask? Well, as a teacher, I find marking students assignments, extremely tiring. I have to mark giant piles of assignments every day until midnight! So, I thought of a brilliant idea: a robot should be created to mark assignments, so that teachers can focus on teaching.

## Introducing: Assignment Marker 3.0

### Introduction:

Equipped with a RobotBrain, multiple hands, a built-in desk and more, the Assignment Marker 3.0 can help teachers to mark assignments more efficiently.

Manufacturer: RobotCorps

Nickname: Smarty

Model: DeskBot Version 7

Special features: Is solar-powered, eco-friendly

# Parts of the robot and its features

1: **Solar Panel Head** - this robot is energy-efficient as it features a solar panel which provides the robot with 93 horsepower per hour: this enables the robot to mark assignments at the speed of 1423 pages per hour.

2: **Super Fast Scanning Eyes** - it scans the homework when it passes the Monitor Board (refer 4) before it arrives at the Built-in Desk (refer 6). It can scan 2 pages per second allowing the whole process of scanning the assignment to be more efficient.

3: **Mouth** - for teacher(s) to put assignments and the answer sheet in and transfer them to the Monitor Board (refer 4).

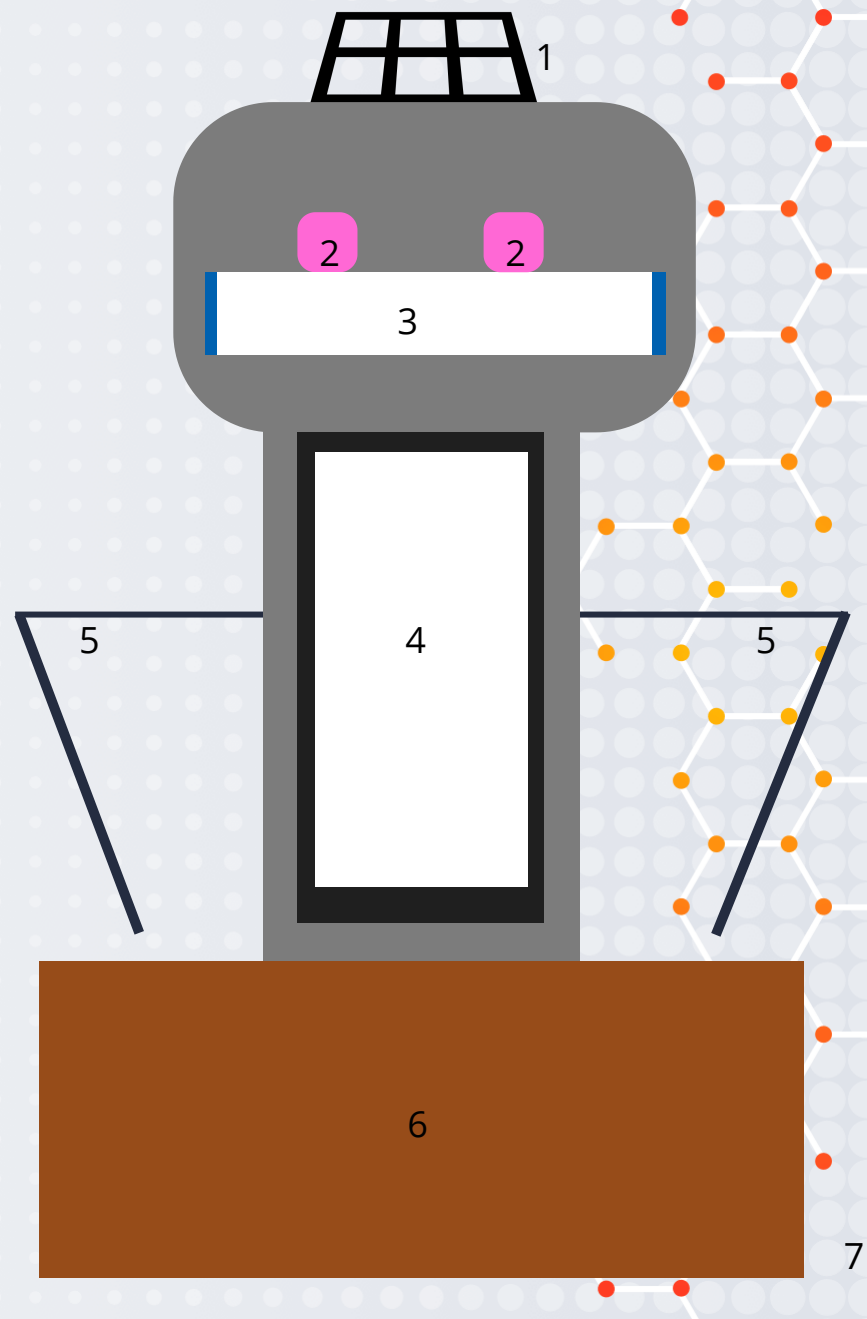
4: **Monitor Board** - for the Super Fast Scanning Eyes (refer 2) to scan and transfer the information to the RobotBrain (refer \*) for processing.

5: **Penarms** - after the RobotBrain (refer \*) processes the information, it will transfer it to the Penarms and they will mark the assignments. They are equipped with 2 red pens on each hand.

6: **Built-in desk** - the assignment arrives here after being scanned by the Super Fast Scanning Eyes (refer 2) on the Monitor Board (refer 4) and will be corrected by the Penarms (refer 5). It can be flipped up and makes the robot more compact for storing.

\***RobotBrain** is the brain of the robot. It helps the robot to analyse the assignments and transfer information to different parts of its body.

6





## Process of marking assignments

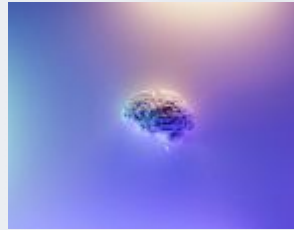
The teacher inserts the assignments and the answer sheet into the Mouth.

The assignment slides down and passes the Monitor Board.

The Super Fast Scanning Eyes scans the assignment when it passes the Monitor Board.



8



The information scanned is transferred to the RobotBrain where it is processed.

The assignment arrives at the Built-in Desk.

The RobotBrain then tells the PenArms what to do.

The assignment is marked.

9

## Comments from users

*"Very efficient and accurate." ~ Mr Chan (Math teacher in Happy Primary School).*

*"An energy-efficient robot. Marks homework in a breeze." ~ Ms. Lam (English teacher in Rainbow Primary School).*

*"A helpful, accurate, eco-friendly, piece of wonderful technology" ~ Mr. Smith (English literature teacher in Sunny Primary School).*

10

## Will robots replace teachers in the near future?

In my opinion, I think robots will not replace teachers in the near future because of the reasons below:

1. Cost: robots will cost a lot of money as they need to be charged and maintained.
2. Interaction with students: robots may be able to teach but they lack interaction with the students. It may cause students to feel bored and dislike learning because of that.
3. Relationship with students: teachers and students have strong bonds but students and robots do not as robots have no feelings. Teachers chat with students and care about them and that makes students feel like they are at home and this leads students to look forward to every day at school.

Therefore, I think robots will not replace teachers in the near future.

11

## Conclusion

Assignment Marker 3.0 is a robot that can help teachers mark assignments. It marks the beginning of a new era where robots could do more to help teachers and students, but we yet to find out how this technology will turn out to be.



**The End**

